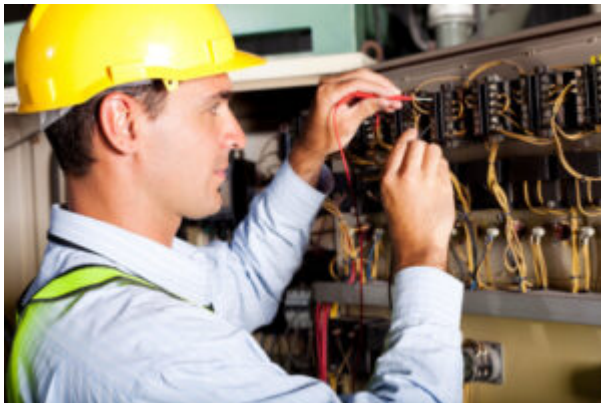


Root Cause Analysis Checklist



BENEFITS

When a safety incident occurs in your workplace, it's important to investigate it to, among other things, identify the root cause so you can prevent similar incidents from happening in the future.

HOW TO USE THE TOOL

This root cause analysis checklist can be used by safety professionals, members of the JHSC or anyone involved in an incident investigation. When answering the questions in the checklist, it's critical to note what actions should be taken to address the issues identified. Once the investigation is complete, make sure someone follows up on these proposed actions.