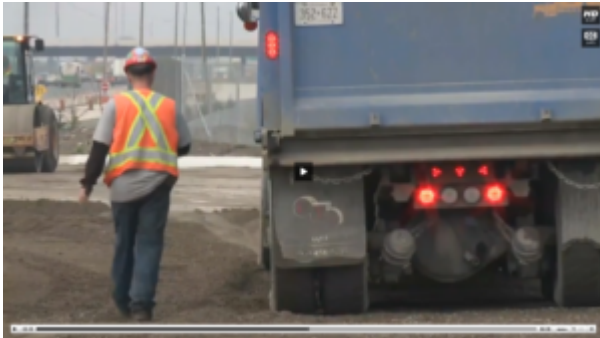


# Constructor Fined \$115,000 for Death of Worker Crushed by Platform



A constructor was building bridge decks on a highway at a river. Precast concrete bridge spans had been installed and workers were pouring liquid grout into the joints. A worker on an elevated work platform under the bridge decks was sealing leaks. The work platform overturned, killing the worker. The constructor pleaded guilty to failing to ensure that the elevated work platform was used only on a firm, level surface and was fined \$115,000 [*Teranorth Construction & Engineering Ltd.*, Govt. News Release, Jan. 24, 2013].